



# Systems Performance Accountability Update

A Presentation to the Washington State School Director's Association  
September 26, 2009

Ms. Edie Harding, SBE Executive Director  
Dr. Steve Dal Porto, SBE Board Member

# WSSDA Proposal #24

---

**“Accountability through local governance”**

SBE supports local school boards' choosing their restructuring efforts outlined under SBE's Required Action.

# Our Challenge (and Opportunity)

---

- Make sure that all our of our kids have an excellent and equitable education.
- Fix the federal system that does not make sense (currently 1073 schools and 103 districts are in a step of improvement).
- Focus critical resources and collaborative efforts in districts with schools in greatest need.

# SBE Accountability Framework

---

- Board endorsed January 2009.
- SBE Accountability Framework: local school boards play a “critical role in addressing student achievement, and must be “proactive (and) collaborative” in order to achieve this end.
- Legislature approved and asked for proposal and timeline by December 1, 2009 on:
  - Accountability Index.
  - Voluntary Assistance to districts.
  - Required Action if No Improvement.

# Feedback from You and Others

---

- Collaborative partnership between state and local district.
- One system of federal and state accountability.
- Resources to implement (and sustain).

# SBE Process to Refine Work

---

- Systems Performance Accountability (SPA) Work Group, studies, and meetings around state (started Spring 2007).
- SPA group discussions on Voluntary Action and Required Action in Spring 2009 with focus on: School and District Improvement Programs and Required Action components.
- New federal initiatives and OSPI programs.

# Update on SBE Accountability Index

---

- SBE adopted draft Accountability Index that focuses on multiple subjects, improvement, and closing the achievement gap - May 2009.
- SBE and OSPI will use draft index with some additions for Joint Recognition Award - November 2009.
- SBE continues to refine index based on feedback to prepare request for change to feds (waiver and NCLB reauthorization - 2010? 11? 12?).

# Use of Current Federal Matrices

- For now, SBE must consider new draft Fed School Improvement guidelines to identify districts and schools for Voluntary and Required Action until the feds agree to the SBE Accountability Index.



# Voluntary Action

---

OSPI currently serves a number of districts and schools through its Title 1 school and district improvement program. Programs range from technical assistance to a Summit District Program.

OSPI in the future may need to change these programs based on new federal guidelines.

# Moving from Voluntary Action to Required Action

---

OSPI and SBE will use criteria based on new federal guidelines as well as other measures to create a list of Priority Districts to determine if they should be eligible for Required Action.

# Required Action

## - Priority Districts -

---

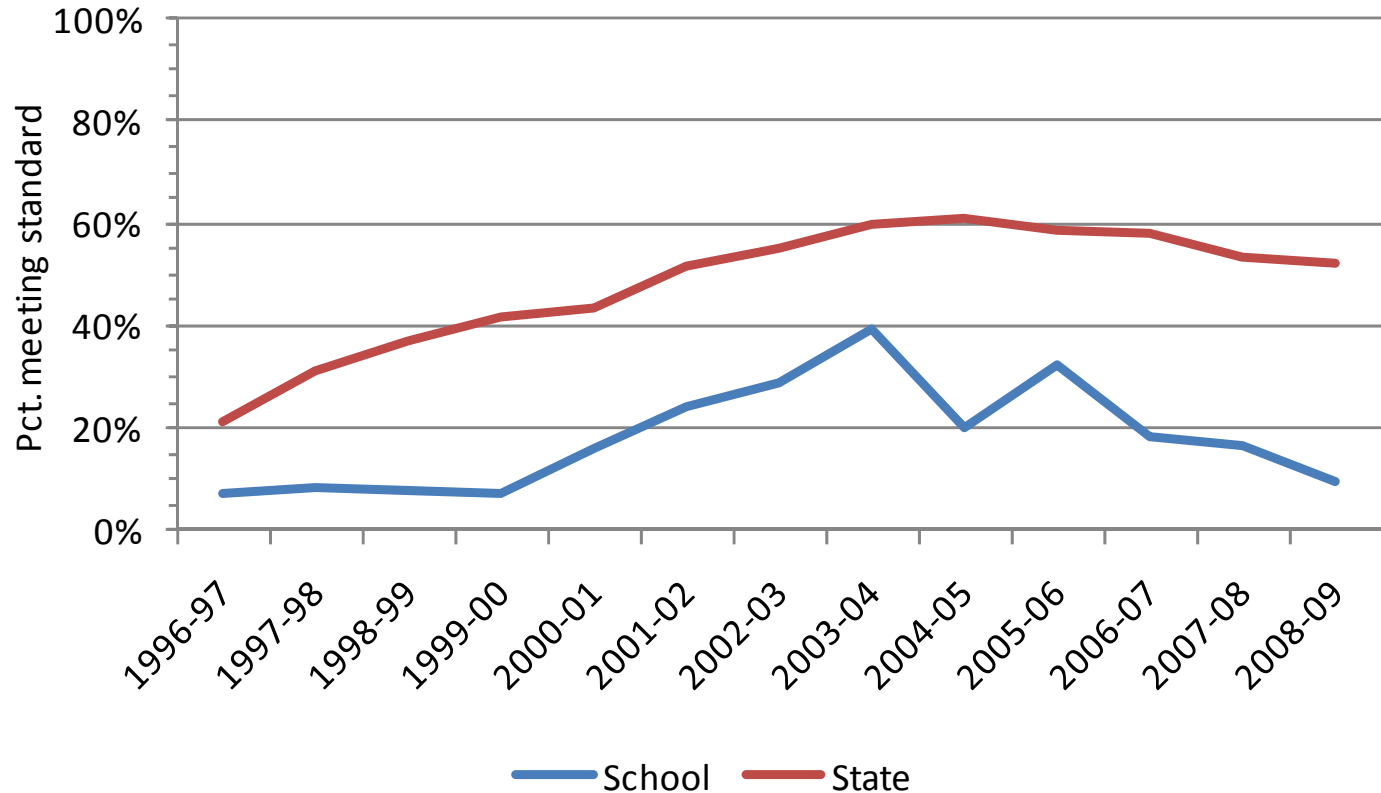
Definition:

Priority Districts contain schools (Title I and non Title I) that have not demonstrated growth in meeting or exceeding the state average performance gains in reading and math for all students over several years regardless of participation in voluntary programs.

Priority Districts are identified and monitored by SBE and OSPI.

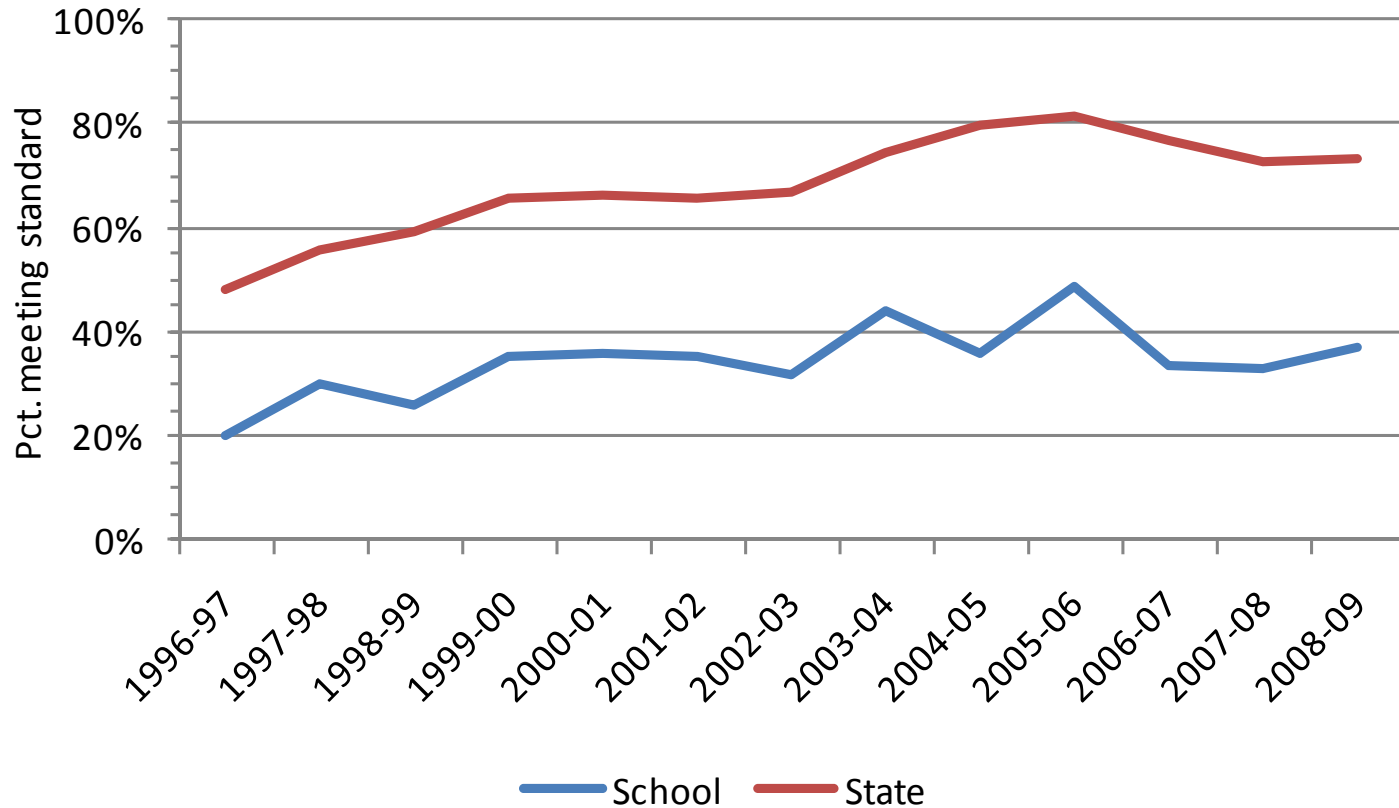
# Example of an Existing Low Performing School in the New Federal Matrix

## Grade 4 Math WASL



# Example of an Existing Low Performing School in the New Federal Matrix

## Grade 4 Reading WASL



# Required Action Steps

---

OSPI will select the Academic Watch districts (those most in need of assistance).

For districts selected for Academic Watch:

- 1.SBE directs OSPI to conduct an independent Academic Performance Audit.

# Required Action Steps

---

2. OSPI will manage the Performance Audit (see next slide).
3. Academic Watch districts will develop an Academic Watch plan and budget.
4. Districts will select one of the four federal school improvement models (turnaround, restart, closure, transformation) **or additional state or local models.**
5. SBE approves local Academic Watch plan which becomes binding for district.

# Required Action Performance Audit

---

## Examples of Potential Performance Audit Recommendations:

- Improved instructional program.
- Reorganization of instructional time.
- Addition of new staff or revised personnel practices.
- Revision to school structures to improve learning opportunities.
- Suggestions to strengthen family and community engagement.

# Required Action Steps

6. The State provides the authority and resources to the district (potential to revise CBA, funding, and technical expertise).
7. With State resources, the district implements the plan and provides quarterly updates on progress.



# Required Action Steps

---

8. OSPI provides assistance and determines when a district is qualified to leave Academic Watch.
9. OSPI notifies SBE annually of a district's Academic Watch status.
10. SBE approves a district's release from Academic Watch or requires the district to select one of the other models not previously utilized by the district.

# Legislative Authority

---

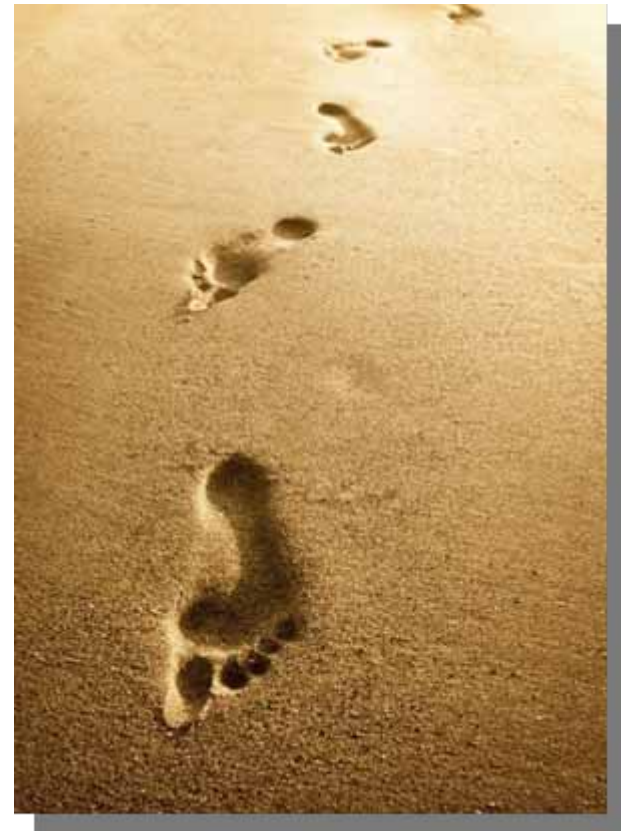
The Legislature must approve this Required Action component, including ensuring **state/local partnerships**, allowing Required Action, and providing the resources and authority for the Academic Watch plan to commence.



# SBE Next Steps

---

- Review elements of this proposal with stakeholders and SPA group Fall 2009.
- Board will take action at its November 12-13 meeting.
- Report and draft legislation due to Legislature December 1.



# Topics for Discussion

---

1. Ideas for proposed process for moving to Required Action (e.g. timelines)?
2. Ideas for state and local district roles in Required Action?
3. Use of language in proposal?